

Glass Cleaning Guide

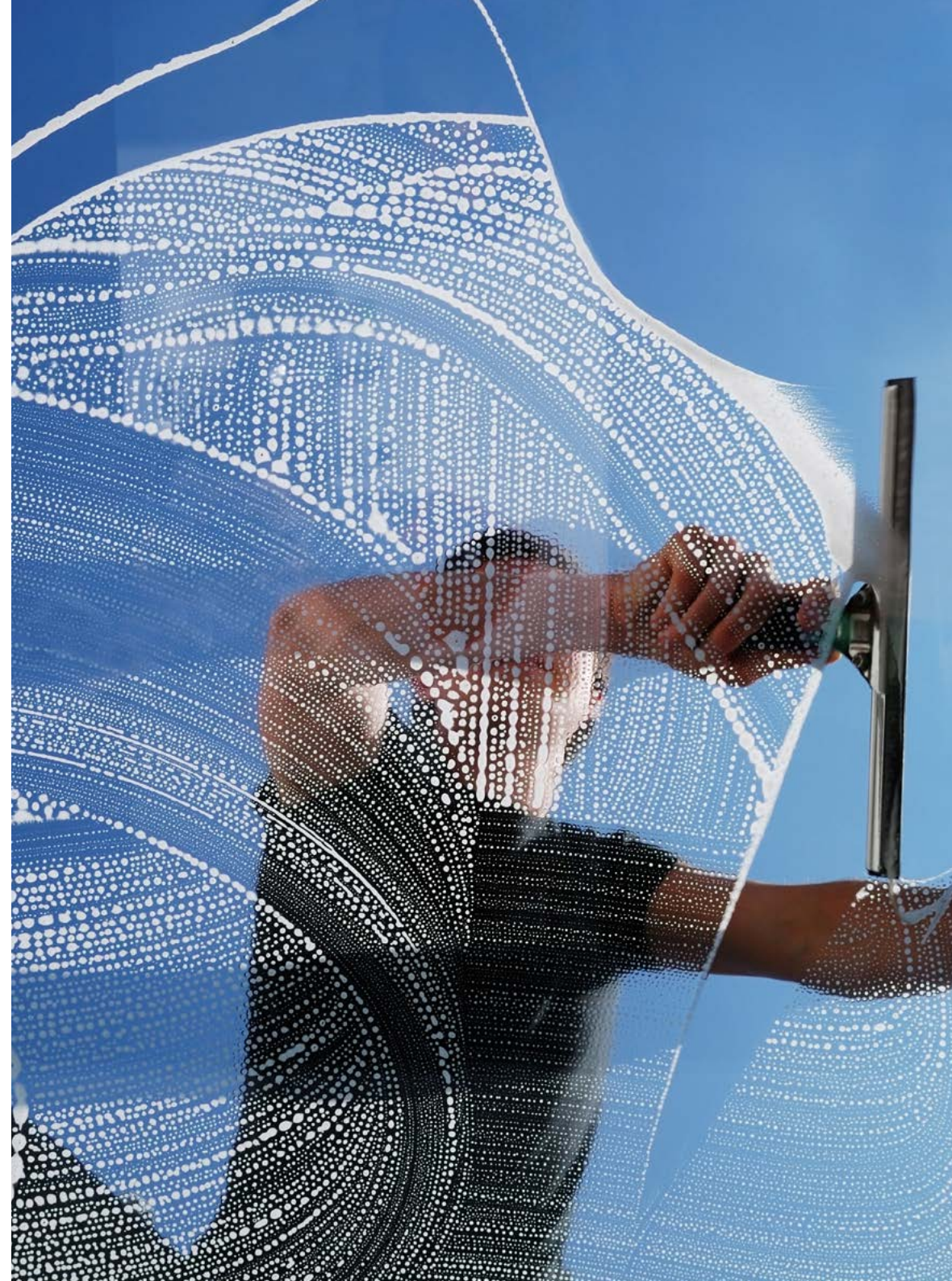


Viridian 
Today. Tomorrow. Together.

Professional and hand cleaning advice

Viridian Glass offers these recommendations for hand cleaning as a general guide only and it is recommended that advice should be sought from professional window cleaners or reputable glazing companies.

It should be noted that in addition to the general cleaning guidelines offered within this document, there are specific recommendations for certain glass types. We have detailed particular methods of cleaning in each glass section and listed specific cleaning products for recommended use.



General hand cleaning

Uncoated annealed, heat treated, laminated and textured glass

There are a number of different glass cleaning products available which will effectively clean these glass products and prevent streaking on the glass surface.

The cleaning of heat treated glass, toughened or heat strengthened requires special attention. During the manufacturing process, fine glass dust particles may adhere to the glass surface. Although hardly detectable to the human eye, it is not advisable to use any form of blade to clean the glass surface as these micro deposits may drag across the surface of the heat treated glass and permanently scratch or damage the glass surface.

Warning: Viridian does not warrant damage caused by razor blades or metal scrapers.

Cleaning method

- Ensure any jewellery or watches are removed before cleaning commences as they may mark or scratch the glass surface
- Generously spray and cover the glass surface with a glass cleaning solution or a vinegar based product
- Wipe dry with a clean, lint free cloth
- Stop wiping just prior to the glass completely drying to prevent streaking
- Be sure not to over clean the glass

A simple cleaning solution:

1 part vinegar + 10 parts water

Things to avoid

- Do not use razor blades, metal tools, scouring pads, steel wool or any abrasive materials or metallic objects to clean the glass surface
- Do not attempt to clean the glass when it is hot or in direct sunlight as the sun can prematurely dry the solution, leaving streaks which can be laborious to clean
- Do not use abrasive cleaners, powder based cleaners or cleaning agents which contain hydrofluoric or phosphoric acid as they can permanently damage the glass surface
- Do not use abrasive cleaning pads or scouring pads as these can permanently mark the surface
- Do not use tapes or adhesives to try and remove marks or stains as these can permanently mark the surface
- For laminated glass, ensure that cleaning solutions do not come into contact with the glass edge
- Do not use newspaper as a substitute for a cloth or paper towel when cleaning the glass surface

Specialist hand cleaning

Ceramic printed, painted, coloured and mirror glass products

Ceramic printed, painted and coloured glass products

Seraphic™, ColourBack™, DecorPanel™, PixaGraphic™ and EnVision™ are specialised ceramic printed, painted and coloured products. Whilst very robust and durable, they do require careful attention when cleaning to ensure that the painted surface is protected appropriately.

Additional cleaning method advice

- Rather than generously spraying solution, ceramic printed, painted and coloured glass only requires a few drops of solution to the glass surface and applied with a clean, damp lint free cloth

Additional things to avoid

- Make sure that when cleaning the face of the glass panel there is no contact with the backing paint/coating, particularly at the edge of the glass
- Keep any moisture away from the edge of the glass

Mirror glass

Whether it's a wardrobe door, a framed mirror in the hall or a feature mirror in the bathroom or changing room, nothing looks better than a beautifully clean mirror in pristine condition. Maintaining the appearance and condition of a mirror is essential to retaining the beauty and ensuring longevity of performance.

Additional cleaning method advice

- Rather than generously spraying solution, mirror glass only requires a few drops of solution to the glass surface and applied with a clean, damp lint free cloth

Additional things to avoid

- Keep any moisture away from the mirrors edges



Specialist hand cleaning

Low E coated glass

It should be recognised that glass with an exposed Low E surface is a specialist glass which requires extra care and attention when cleaning.

Single glazed Low E coated glass products such as EnergyTech™ and SolTech™ have a very thin metal coating on the interior glass surface. This hard and durable coating gives the product its improved thermal insulation and solar control performance compared to ordinary clear glass.

Whilst the coating is very hard and particularly durable, it cleans differently to non-coated glass. The recommended cleaning solution for the coating associated with these glass types is a solution made up of one part vinegar with 10 parts water.

It is not advisable to use Alkaline or alcohol based cleaning solutions as they can leave visible streaks.

The cleaning of the non-coated surface of the glass should be undertaken in line with the recommendations outlined previously.

Additional cleaning method advice

- For adhesives and paints, spot cleaning can take place by using Acetone but only strictly in accordance with the manufacturers recommendations
- To remove paint or residue from tapes or labels, spot cleaning can be carried out but must be applied to the glass area only, and care must be taken around frames or other non-glass surfaces
- The coated surface can mark and appear scratched if contacted with framing tools. For handling marks, spot cleaning can take place by using Hydrochloric acid but only strictly in accordance with the manufacturers recommendations
- Before using Hydrochloric acid on the glass surface ensure that the glass has been cleaned with clean water and a lint free towel or cloth to ensure all loose debris has been removed. Refer to the manufacturer's handling instructions and trial in an inconspicuous location first

Additional things to avoid

- Do not use a Squeegee® to clean the internal coated surface
- Because the coated surface of the glass is so hard it actually removes metal from the tool or pad and deposits it on the glass surface making it difficult to remove

Disclaimer: The utmost care must be taken when using cleaning products such as Hydrochloric acid. Viridian Glass does not take responsibility for the safe handling of such products, so please ensure you follow the safety instructions supplied by the manufacturer carefully to avoid harm to yourself or surrounding materials.

Other considerations and important notes

Recommendations during construction

- Always follow manufacturers installation and cleaning instructions
- Glass should be protected from the risk of contamination caused by building materials and other exposure risks during construction, which will simplify the glass cleaning task at the end of the project. If the glass cannot be protected during construction then it should be cleaned frequently to ensure no permanent damage occurs
- Construction dust, leachate from concrete and rusting from steel can contribute to the formation of mild chemical reactions; this may stain or otherwise damage the surface of glass, voiding warranties
- Glass should be cleaned using only cleaning materials which are free of grit and debris to avoid permanently scratching or marking the glass surface
- Only detergents and cleaning solutions which are recommended for cleaning glass should be used. Mild detergents or organic cleaners without sulphates are preferable
- Temporary screens must be installed if welding, sandblasting, floor sanding, cuffing or other potentially damaging construction practices takes place near the glass

- Glass installations which are adjacent to concrete e.g. concrete slab floors, require extra care and cleaning due to the abrasive nature of concrete dust
- All tradespeople should be aware of potential damage to glass and leave in place any materials protecting the glass during the construction period

Other recommendations

- Do not allow cleaning solutions to contact the edges of the laminated glass, insulating glass units or mirrors
- Do not store or place other material in contact with the glass. This can damage the glass or create a heat trap leading to thermal breakage
- In areas where glass is exposed to sea salt spray we recommend higher levels of regular cleaning, particularly where the internal glass surface (Low E coating) is exposed to indirect sea salt spray

Paint damage

Do not remove paint spots using a sharp razor blade or metal scrapers. The use of these items will cause damage to the glass. As an alternative, investigate solvents or graffiti removal materials, ensuring that they will not damage the glass.

Warning: Viridian does not warrant damage caused by razor blades or metal scrapers.

What to do if glass breakage occurs?

If glass is damaged or broken ensure that experienced glaziers are engaged to rectify the situation. Glass can be a safety hazard if not handled properly.

Do not attempt to remove or replace broken glass unless you are experienced in doing so as broken glass can be extremely dangerous and cause serious injuries or death.

Disclaimer: Viridian offers this information as general advice only.

ViridianTM

Today. Tomorrow. Together.

For more information visit viridianglass.com | 1800 847 434

Viridian Glass Pty Ltd product brands which contain TM or ® are considered the Intellectual Property of Viridian Glass Pty Ltd. Unauthorised usage of these trademarks is prohibited. Viridian Glass Pty Ltd reserves all rights to protect and enforce its trademark rights under the TradeMarks Act 1995. All images are for illustration purposes only.